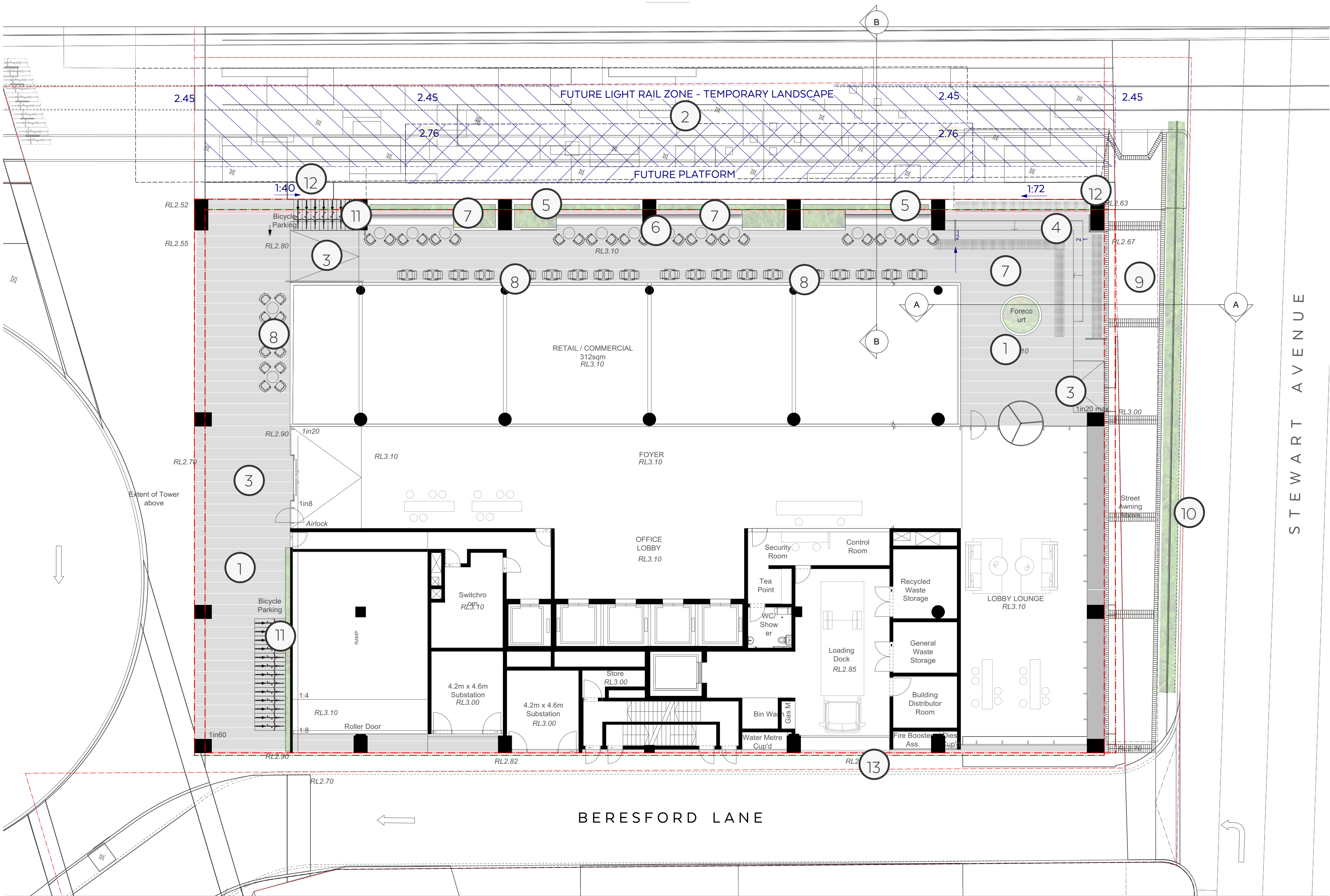




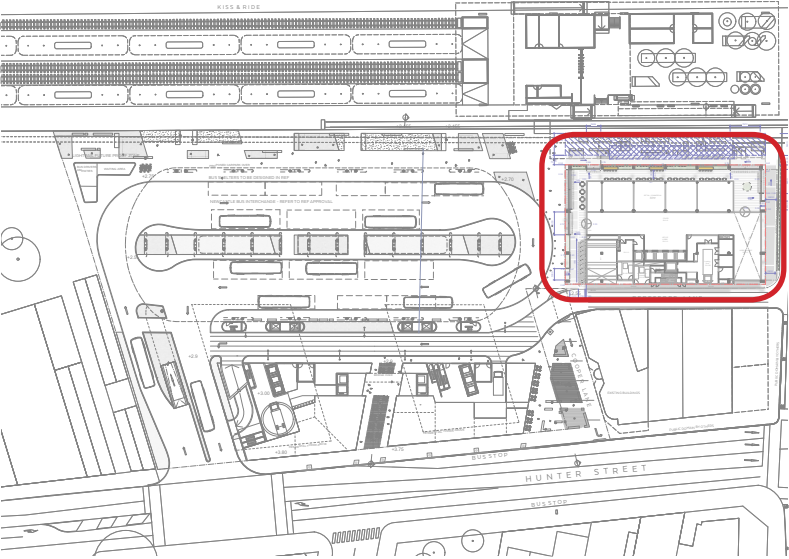
APPENDIX B LANDSCAPE DRAWINGS

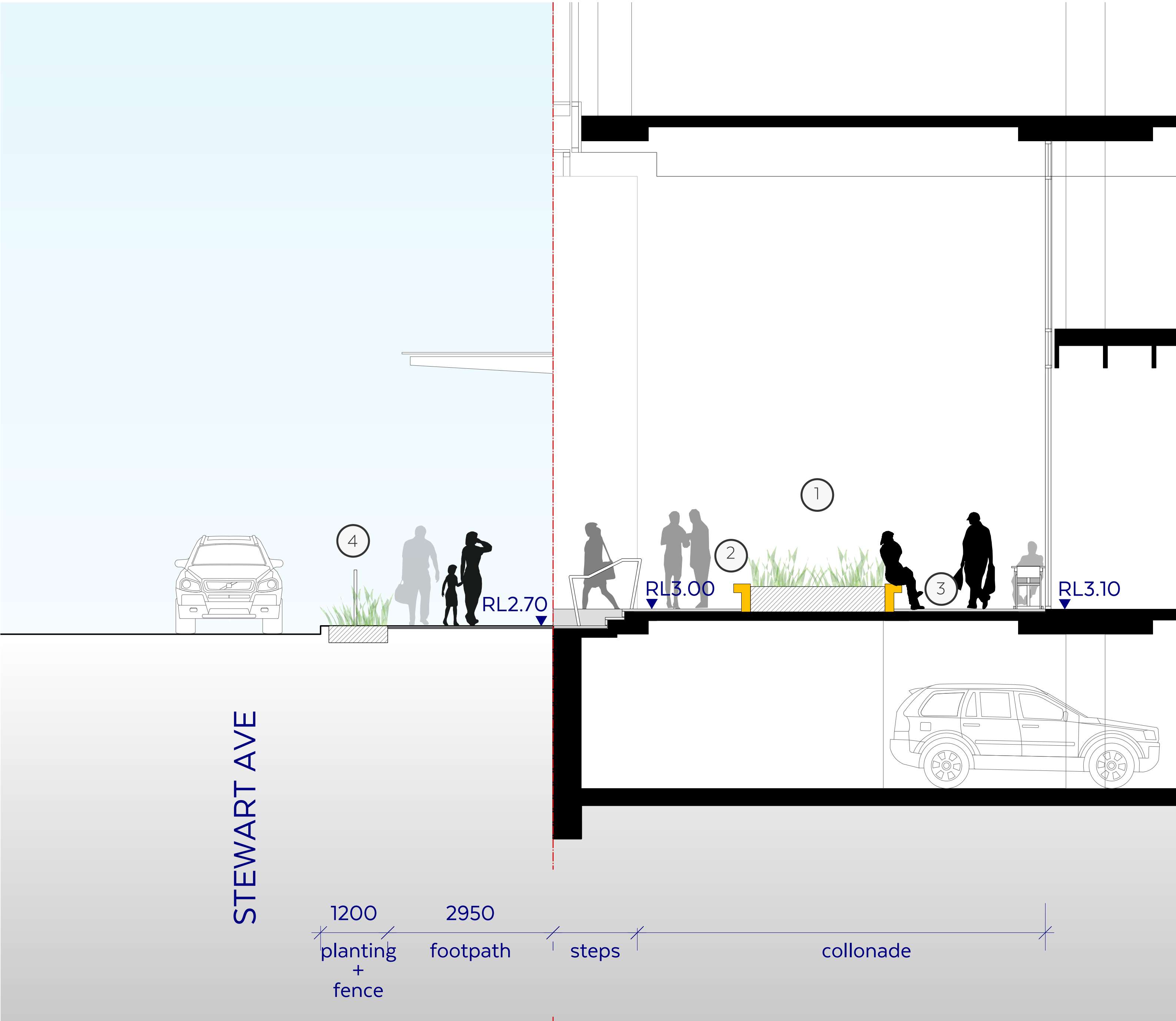


Ground Floor Plan 1: 150 @ A1

Legend

1. Banded paving masonry and clay brick pavers with paving pattern referencing Councils streetscape palette and the Railway concourse. To further development and detail.
2. Temporary landscape zone shown nominally. Not part of this DA, for further design development..
3. All access connections to podium.
4. Wide generous steps to colonnade, retail and foyers appropriate for high pedestrian movement.
5. Planters along northern interface with future light rail zone. (refer to sections)
6. Narrow bar type tables and fixed seating.
7. Vertical green feature as a backdrop to bicycle parking and to contribute to greenery within the bus interchange. Exact location and extent of this feature to be developed further.
8. Dedicated outdoor food and beverage zone with removable cafe style chairs and tables.
9. Paving on Stewart Avenue to be typical Council brick banding and insitu concrete infill.
10. Narrow landscape strip at base of TfNSW standard fence to provide streetside greening.
11. 20 bicycle storage consistent with the Newcastle Bike strategy requirements.
12. Dedicated pedestrian through connection from the bus interchange to Stewart Street.
13. Refuge zone on Beresford Lane for pedestrians as required.



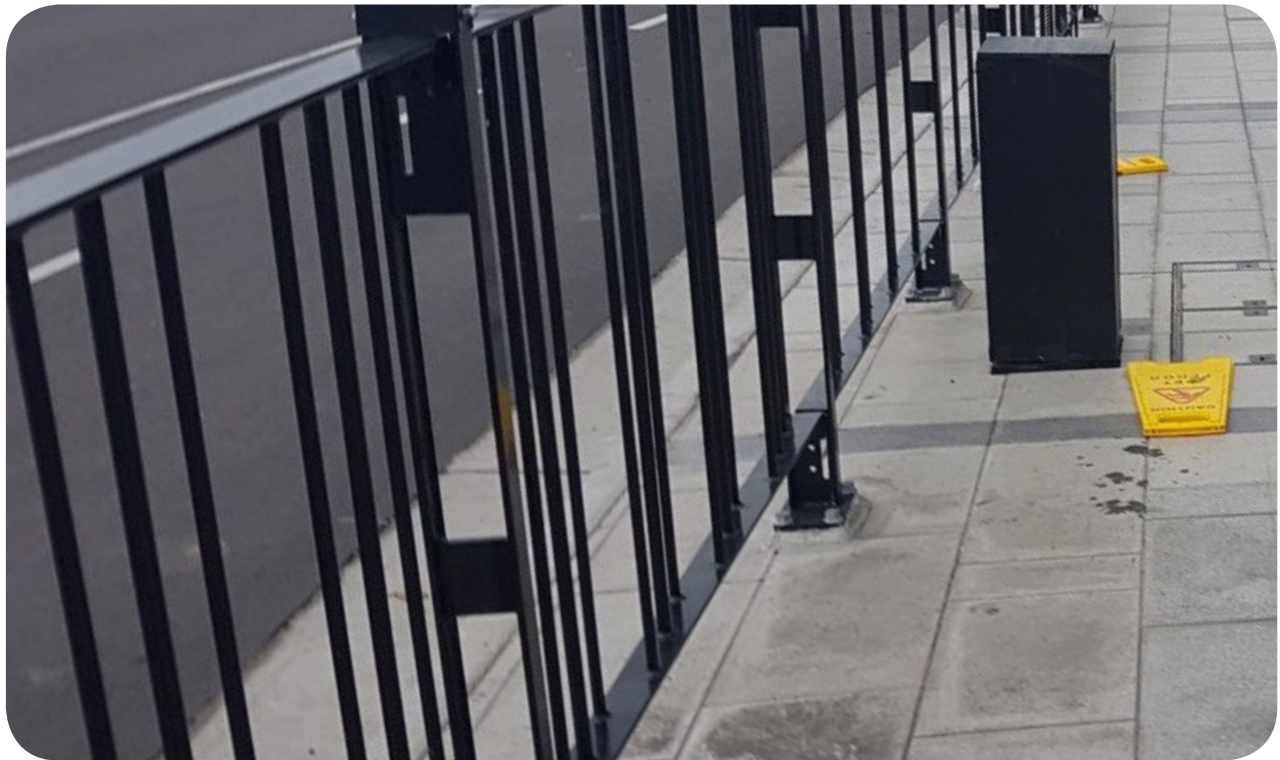


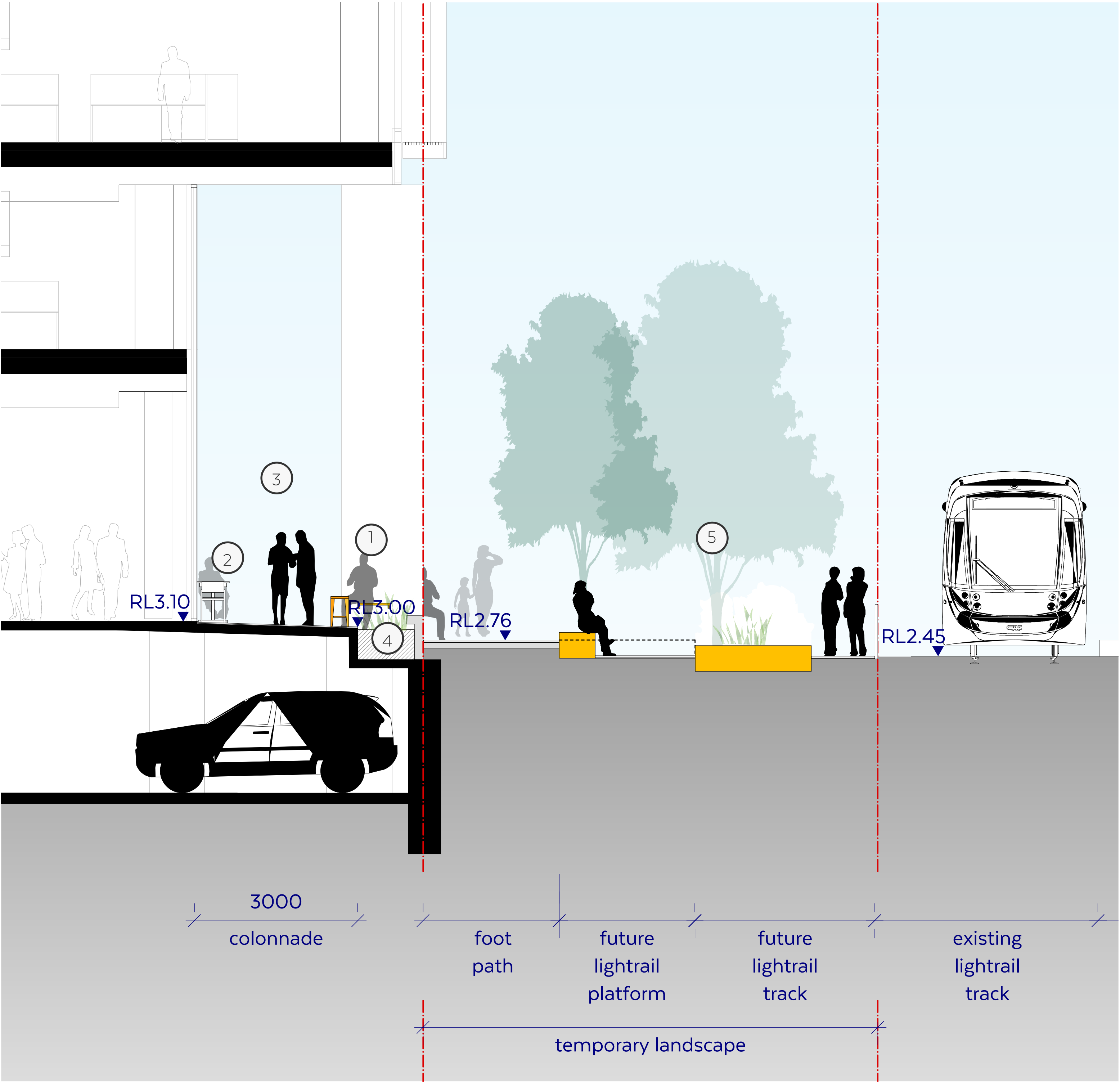
Section A- A Scale 1:50 @ A1



Section A-A Legend

- 1. Greenery at entrance to foyer.
- 2. Possibility of standalone fixed furniture.
- 3. Detail linear paving within building footprint to tie in with proposed NBI pavement.
- 4. Standard RMS pedestrian fence type 1 along Stewart Avenue.





Section B- B Scale 1:50 @ A1



Section B-B Legend

- 1. Fixed seating integrated with planter,
- 2. Bar type seating with character relating to each retail tenancy in shopfront food and beverage zone.
- 3. Passageway nominally unrestricted 1800mm width through colonnade.
- 4. Planters with green facade.
- 5. Linear planting and landscape character in temporary zone (not subject to this development application).

